


HOBO Energy Logger



HOB0 Energy Logger H22-001

15.4 x 9.4 x 5.1 cm
(6.06 x 3.69 x 2.00 in)
418.7 g (14.77 oz)

- Temperature
- Relative Humidity (RH)
- AC Current (True RMS)
- AC Voltage (True RMS)
- DC Current
- kW
- kWh
- Gauge Pressure
- Differential Air Pressure
- CO₂
- Pulse inputs from electric, or flow meters
- Other third-party sensors via 4-20mA/0-20 VDC

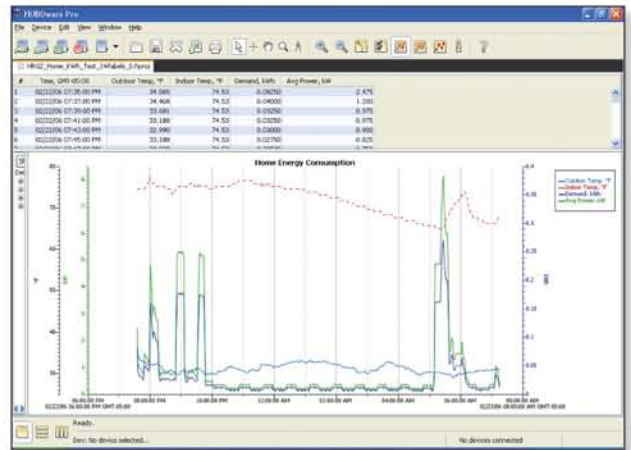
Memory: Up to 512,000 measurements, number varies based on sensor selection
Sample rate: 1 second to 18 hours, user-selectable
Battery life: 1-year typical, based on 75mA sensor excitation, 1 second-warmup time, and 10-minute logging interval—user-replaceable, AC adapter (optional) 

Ideal for Building Commissioning
LEED Projects
Compressed Air Auditing
Energy Management & Facilities Management
HVAC/R Diagnostics
IAQ Projects
Chiller Optimization
M&V Projects
Performance Verification
Renewable Energy Installations

The HOB0 Energy Logger is a modular, re-configurable data logging system for energy and environmental monitoring applications.

Key Advantages:

- Onset's most flexible logger records up to 15 channels
- The HOB0 Energy Logger accepts up to three two-channel modules and six plug-and-play Smart Sensors (some sensors measure more than one parameter)
- Provides 12v excitation for third-party sensors
- Pre-configured Smart Sensors for fast setup
- Signal conditioning modules retain configurations until you change them, providing plug-and-play convenience for commonly used sensors
- Flexible power options include battery operation or AC power adapter



HOB0ware Pro Software provides easy logger launch, data readout, and plotting.

HOBO Energy Logger Ordering Guide

HOBO Energy Logger FlexSmart™ TRMS Module FlexSmart™ Analog Module	H22-001 S-FS-TRMSA S-FS-CVIA	Differential Air Pressure Transducer .01-10.0 WC .01-10.0 WC Vaisala Duct-Mount RH/Temp	T-VER-PXU-L T-VER-PXU-X
Pulse Input Adapter	S-UCC-M006	Telaire CO ₂ /Temp Cable to Module	T-VAI-HMD-40Y TEL-7001 CABLE-2070
Sensors <i>Smart Sensors (plug-and-play, no module required).</i>		DC Current 0-200 Amp -200 to 200 Amp	T-VER-H970-200 T-VER-971BP-200
12-bit Temperature 2-m cable 6-m cable 17-m cable	S-TMB-M002 S-TMB-M006 S-TMB-M017	Air Velocity Sensor 0.15-10 m/s 0.15-5 m/s 0.15-10 m/s 0.15-5 m/s	T-DCI-F900-L-P T-DCI-F900-L-O T-DCI-F900-S-P T-DCI-F900-S-O
12-bit Temp/RH 2-m cable 8-m cable	S-THB-M002 S-THB-M008	Compressed Air Flow Meter 1-80 SCFM** 3-350 SCFM**	T-CDI-5200-10S T-CDI-5400-20S
WattNode kWh <i>Pulse Input Adapter required.</i> Wye config 208/240 Wye 208/240 opt Delta/Wye config 208/240 Delta/Wye config 480 "B" Series Voltage Lead Set	T-WNB-3Y-208 T-WNB-3Y-208-P T-WNB-3D-240 T-WNB-3D-480 A-WNB-LEADSET	Volatile Organic Compound (VOC) 0-10, 0-100, 0-1000 ppm	T-ION-TVOC
Veris kWh <i>Pulse Input Adapter required.</i> 1-phase, 300 Amp 3-phase, 800 Amp	T-VER-8051-300 T-VER-8053-800	Solar & Wind Silicon Pyranometer (solar radiation) Wind Speed Sensor Wind Speed & Direction Sensor	S-LIB-M003 S-WSA-M003 S-WCA-M003
Pulse Input Sensor Water Flow Meter	T-MINOL-130	Adapters for R.M. Young Wind Monitoring Wind Monitor AQ Marine Wind Monitor Wind Sentry Wind Alpine	S-WCB-M003 S-WCC-M003 S-WCD-M003 S-WCE-M003
True RMS Current and Voltage <i>FlexSmart TRMS Module required (Part #S-FS-TRMSA).</i>		Accessories Mounting Feet Kit DIN Mount Kit AC power adapter Smart Sensor Extension Cables (total cable length of all sensor cables is 100 m (300 ft). 2-m length 5-m length 10-m length 25-m length 1-to-2 Sensor Adapter***	A-H22-MOUNT-1 A-H22-DINMOUNT-1 P-AC-1 S-EXT-M002 S-EXT-M005 S-EXT-M010 S-EXT-M025 S-ADAPT-5
Magnelab Split-Core AC Current (also used with WattNode) 0-5 Amp 0-20 Amp 0-50 Amp 0-100 Amp 0-200 Amp 0-600 Amp	T-MAG-SCT-005 T-MAG-SCT-020 T-MAG-SCT-050 T-MAG-SCT-100 T-MAG-SCT-200 T-MAG-SCT-600		
Magnelab AC Voltage 0-150 Volt 0-300 Volt 0-600 Volt	T-MAG-SPT-150 T-MAG-SPT-300 T-MAG-SPT-600		
Analog Input Sensors <i>These sensors require a FlexSmart Analog Module (Part #S-FS-CVIA).</i> Veris kW Ashcroft Gauge Pressure 100 psig 200 psig 500 psig	T-VER-8044-100 T-ASH-G2-100 T-ASH-G2-200 T-ASH-G2-500	Software HOBOWare Pro Software (Windows/Mac) Serial Interface Cable (Required) USB Interface Cable	BHW-PRO-CD CABLE-PC-3.5 ADAPT-SER-USB
		Optional Communications HOBO U-Shuttle* Serial to Ethernet Server	U-DT-2 SERVER-DS203

*Requires HOBOWare Pro software

**Can also be configured for pulse output

*** When used with Smart Sensor Extension Cables, this allows a single smart sensor input to branch to two Smart Sensors.

Authorised Distributor:



Precicon D&C Pte Ltd

A Tai Sin Electric Company

CELEBRATES 25 YEARS OF QUALITY SERVICE AND INNOVATION

27 Gul Avenue Singapore 629667 ■ Tel: (65) 6897 7008 ■ Fax: (65) 6897 8890

Email: marketing@precicon.com.sg ■ Website: www.precicon.com.sg