

CG Series Electric Centric Gripper

CGE-10-10

CGI-100-170

CGC-80-10

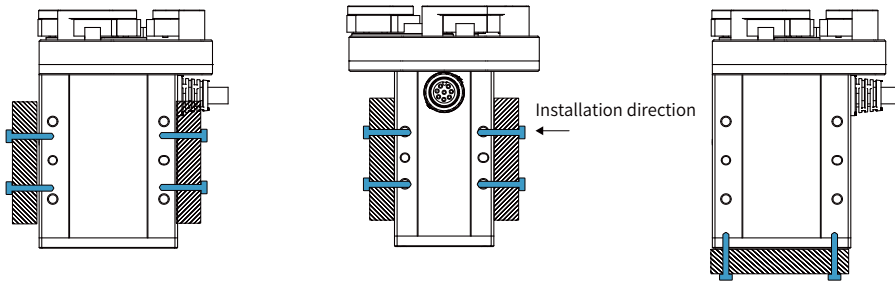


The CG series is a three-finger centric gripper independently developed by DH-Robotics. The three-finger gripping method can better cope with the grasping task of cylindrical workpieces. The CG series is available in a variety of models for a variety of scenarios, stroke and end devices.



Installation

1. Front and rear installation: use front and rear screw holes for installation
2. Side installation: use side screw holes for installation
3. Bottom installation : use bottom screw holes for installation



Product Features

● High Performance

Realize high-precision centering and grasping, the process structure meets the requirements of high rigidity, and the energy density exceeds that of similar products

● Long Lifetime

Continuous and stable work above 10 millions times without maintenance.

● Overload Protection

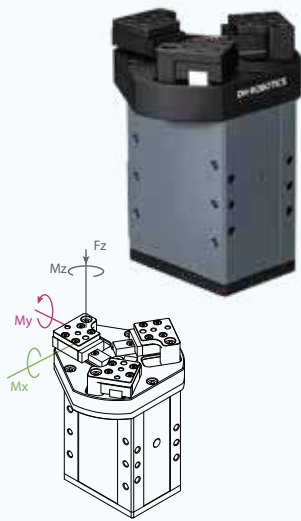
The high-performance servo motor can provide instantaneous overload protection



Application

Accurate and stable grasping of cylindrical workpieces in the fields of auto parts, automation equipment, precision machining and assembly, etc.

CGE-10-10



Static Vertical Allowable Load

Fz 150 N

Allowable Loading Moment

Mx 0.62 N · m

My 0.62 N · m

Mz 0.62 N · m

*① It depends on the shape of the grasping object, the material and friction of the contact surface, and the acceleration of the motion, if you have any questions, please contact us.

*② Use optional communication, need external communication conversion box, please consult the sales staff for details

Parameters

Product Parameter

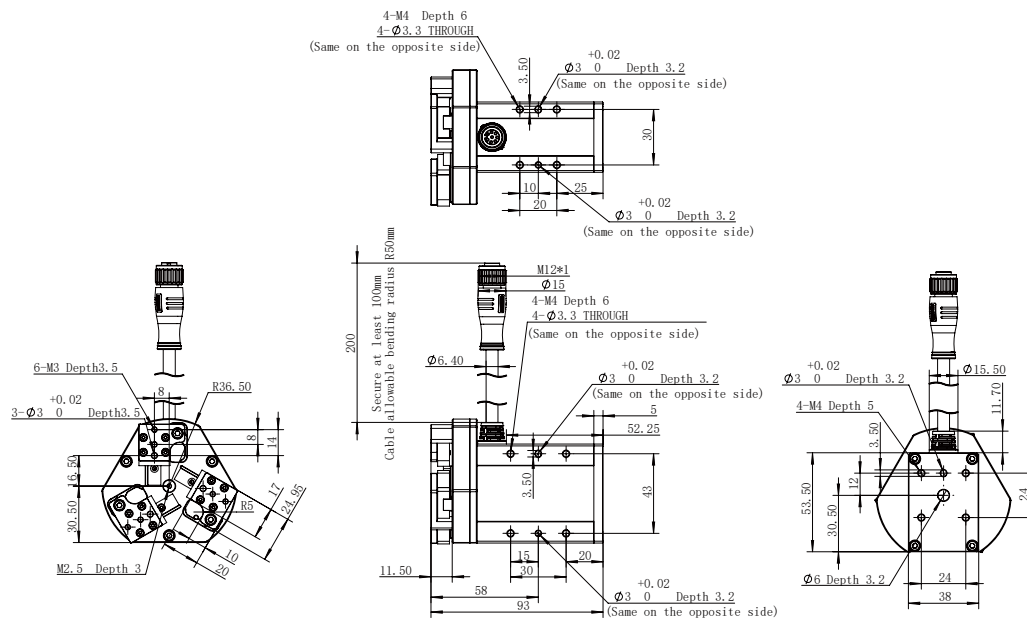
Gripping force (per jaw)	3~10 N
Stroke	10 mm
Recommended workpiece weight * ^①	0.1 kg
Opening/closing time	0.3 s/0.3 s
Repeat accuracy (position)	± 0.03 mm
Noise emission	< 40 dB
Weight	0.43 kg
Driving method	Precise planetary gear reducer + Rack and pinion
Size	94 mm x 53.5 mm x 38 mm

Working Environment

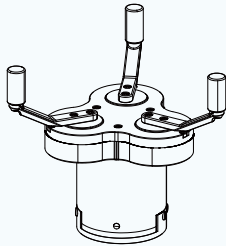
Communication interface	Standard: Modbus RTU (RS485), Digital I/O Optional: TCP/IP, USB2.0, CAN2.0A, PROFINET, EtherCAT * ^②
Rated voltage	24 V DC ± 10%
Rated current	0.3 A
Peak current	0.6 A
Recommended environment	0~40°C, under 85% RH
Certification	CE, FCC, RoHS

<input checked="" type="checkbox"/>	<input checked="" type="checkbox"/>	<input checked="" type="checkbox"/>	<input checked="" type="checkbox"/>	<input checked="" type="checkbox"/>	<input type="checkbox"/>
Build-in Controller	Gripping Force Adjustable	Position Adjustable	Speed Adjustable	Drop Detection	Self-locking Mechanism

Technical Drawings



CGI-100-170



This type of gripper is recommended to use the standard finger. If you need to replace it in the application, please contact us for confirmation.

Parameters

Product Parameter

Gripping force (per jaw)	30~100 N
Recommended workpiece diameter (inward)	φ40~φ170 mm
Recommended workpiece weight * ^①	1.5 kg
Opening/closing time	0.5 s/0.5 s
Repeat accuracy (position)	± 0.03 mm
Noise emission	< 50 dB
Weight	1.5 kg
Driving method	Precise planetary gears + Rack and pinion
Size	158.4 mm x 124.35 mm x 116 mm (without brake/with brake, same size)

Working Environment

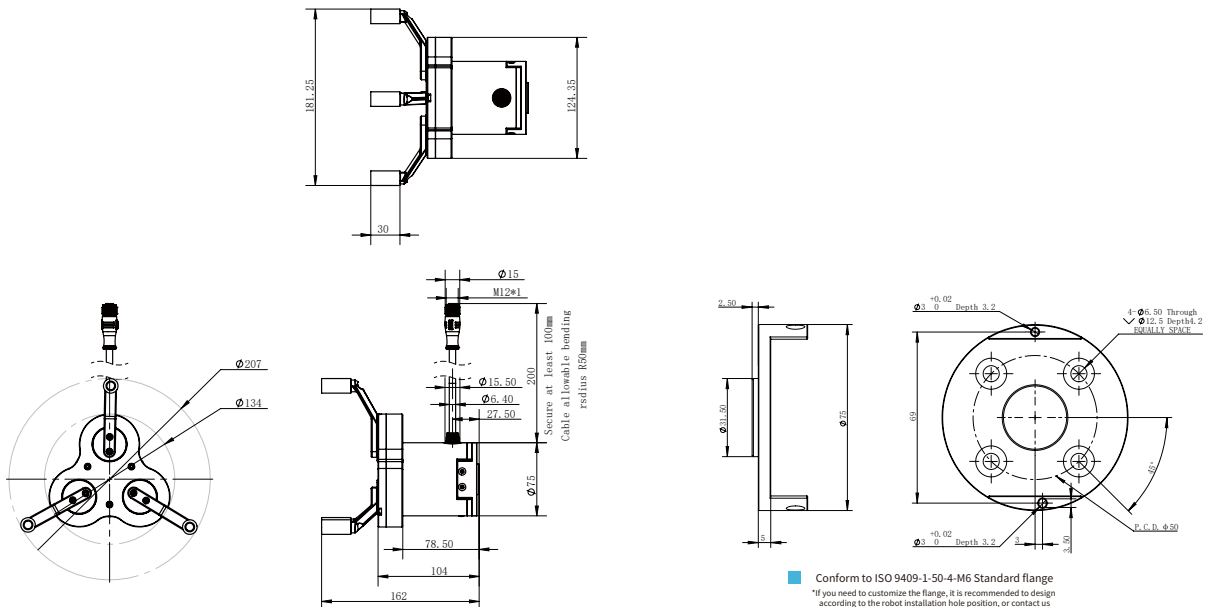
Communication interface	Standard: Modbus RTU (RS485), Digital I/O Optional: TCP/IP, USB2.0, CAN2.0A, PROFINET, EtherCAT * ^②
Rated voltage	24 V DC ± 10%
Rated current	0.4 A
Peak current	1 A
IP class	IP 40
Recommended environment	0~40°C, under 85% RH
Certification	CE, FCC, RoHS

*^① It depends on the shape of the grasping object, the material and friction of the contact surface, and the acceleration of the motion, if you have any questions, please contact us.

*^② Use optional communication, need external communication conversion box, please consult the sales staff for details

<input checked="" type="checkbox"/>	<input checked="" type="checkbox"/>	<input checked="" type="checkbox"/>	<input checked="" type="checkbox"/>	<input checked="" type="checkbox"/>	<input type="checkbox"/> <input checked="" type="checkbox"/>
Build-in Controller	Gripping Force Adjustable	Position Adjustable	Speed Adjustable	Drop Detection	Self-locking Mechanism

Technical Drawings



CGC-80-10



Static Vertical Allowable Load

Fz 200 N

Allowable Loading Moment

Mx 2.5 N·m

My 2 N·m

Mz 3 N·m

*① It depends on the shape of the grasping object, the material and friction of the contact surface, and the acceleration of the motion, if you have any questions, please contact us.

*② Use optional communication, need external communication conversion box, please consult the sales staff for details

Parameters

Product Parameter

Gripping force (per jaw)	20~80 N
Single jaw	10 mm
Recommended workpiece weight *①	1.5 kg
Opening/closing time	0.2 s/0.2 s
Repeat accuracy (position)	± 0.03 mm
Noise emission	< 50 dB
Weight	1.5 kg
Driving method	Precise planetary gear reducer + Rack and pinion
Size	141 mm x 103 mm x 75 mm

Working Environment

Communication interface	Standard: Modbus RTU (RS485), Digital I/O Optional: TCP/IP, USB2.0, CAN2.0A, PROFINET, EtherCAT *②
Rated voltage	24 V DC ± 10%
Rated current	0.3 A
Peak current	1 A
IP class	IP 67
Recommended environment	0~40°C, under 85% RH
Certification	CE, FCC, RoHS

● Build-in Controller	● Gripping Force Adjustable	● Position Adjustable	● Speed Adjustable	● Drop Detection	● Plug & Play	● Self-locking Mechanism
-----------------------	-----------------------------	-----------------------	--------------------	------------------	---------------	--------------------------

Technical Drawings

