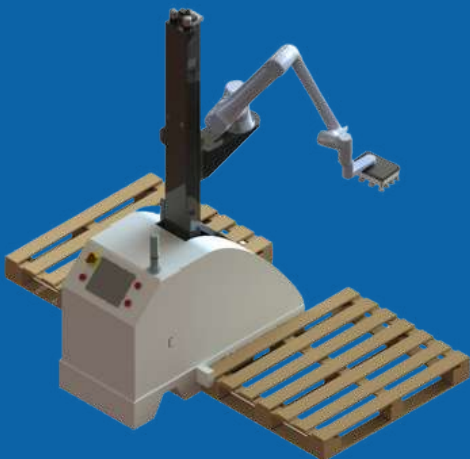




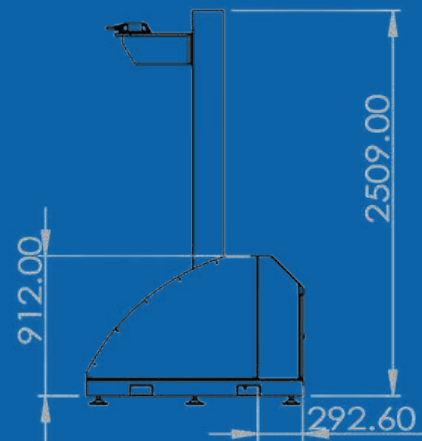
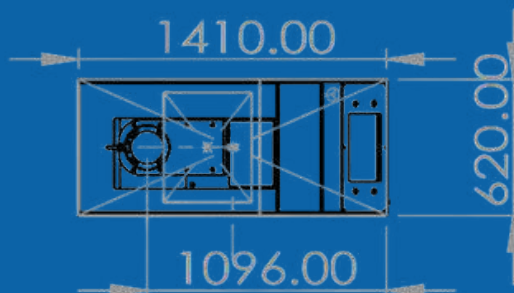
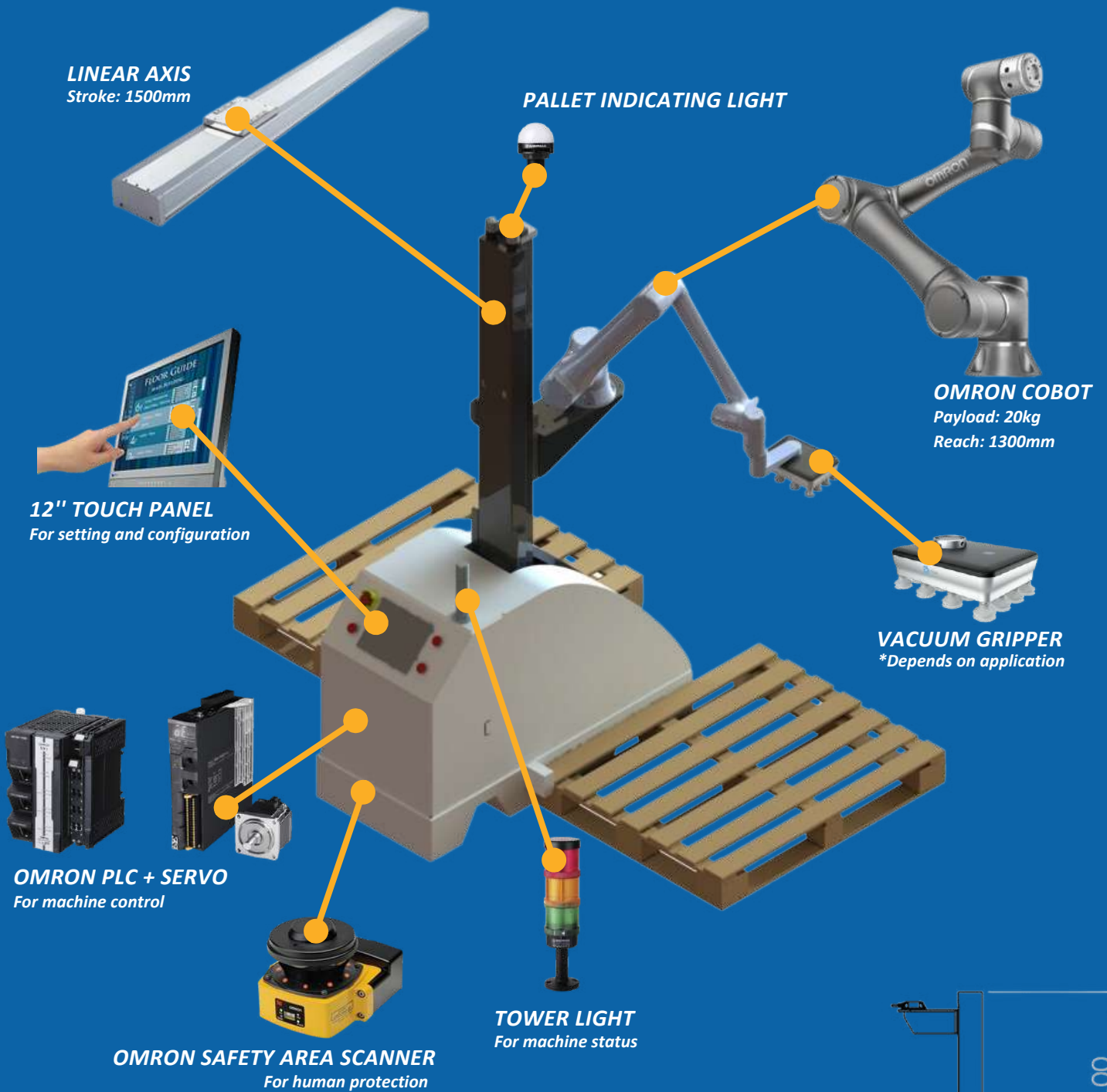
# **PALLETIZING SOLUTION**



**YOUR ROBOTIC  
AUTOMATION  
PARTNER**

# HARDWARE

## PALLETIZING ROBOT





# PR20LA

## PALLETIZING ROBOT



### Flexible

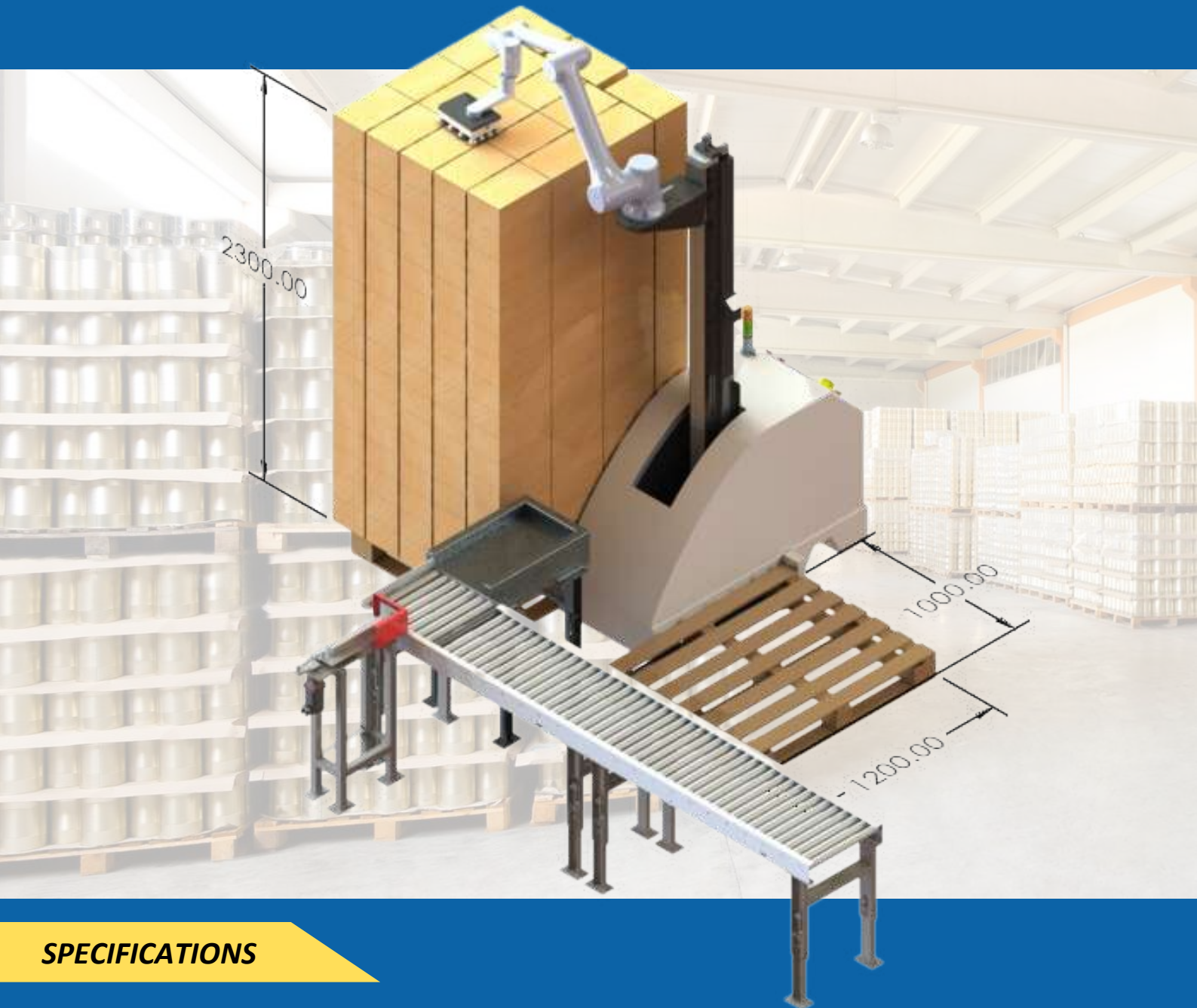
Cell modifications can easily be applied

### Collaborative

Switching between human and robot operation while keeping traceability

### Scalable

Several palletizer robots can be added to the same controller



## SPECIFICATIONS



### COLLABORATIVE ROBOT

Omron TM 20  
Max Payload: 20 kg  
Reach: 1300 mm



### PALLET HEIGHT

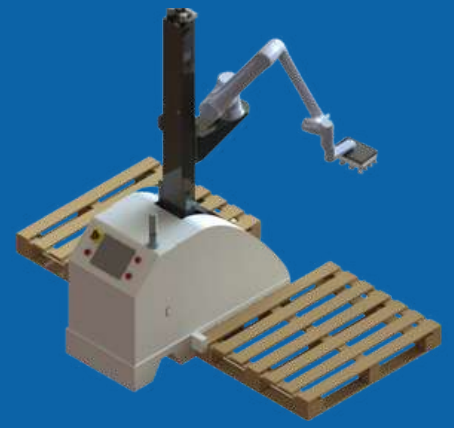
Max height: 2200 mm

### BOX THROUGHPUT

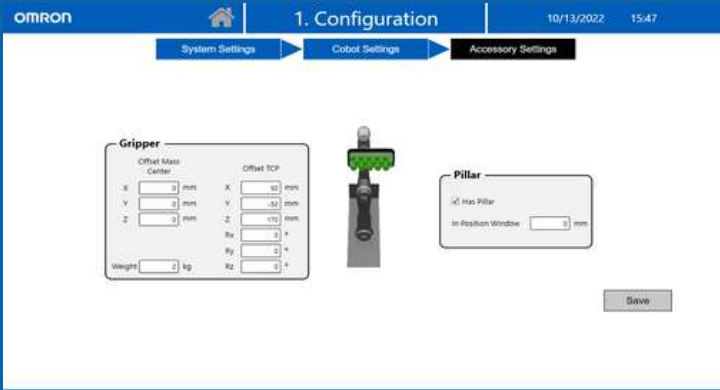
Max: Up to 13 cycles/min\*

\*Depending on box weight, dimensions, and surface as well as pallet dimensions and layout.

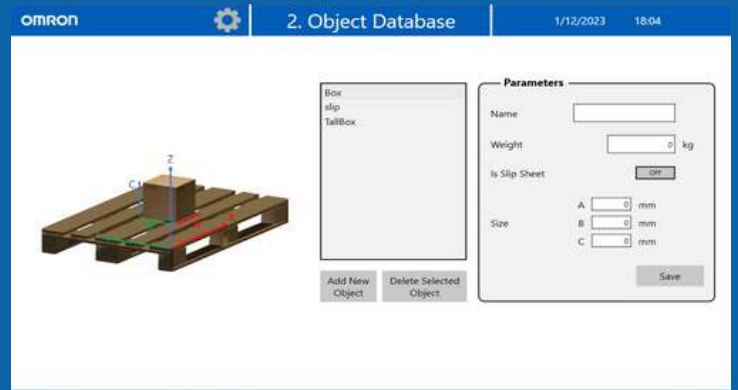
# SETTING UP YOUR APPLICATION IN 4 EASY STEPS



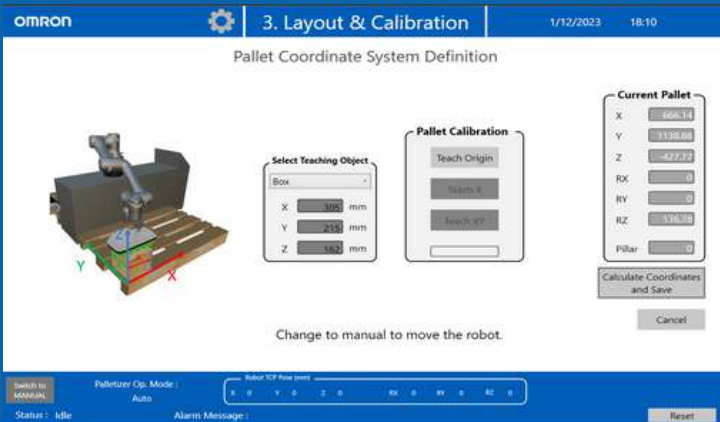
## 1 ENTER COBOT CONFIGURATION



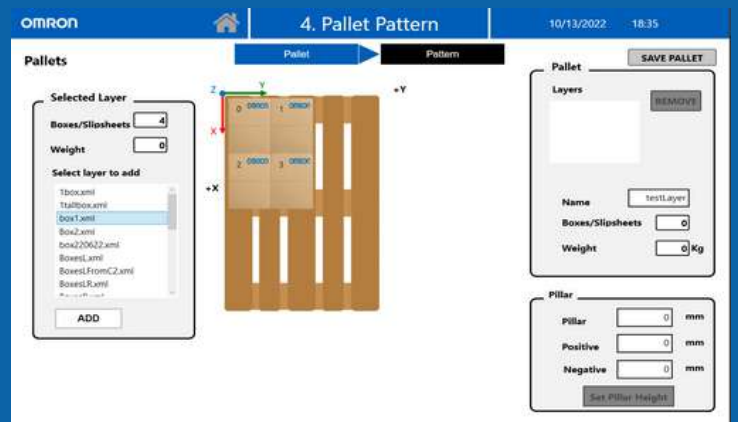
## 2 ENTER BOX DIMENSION & WEIGHT



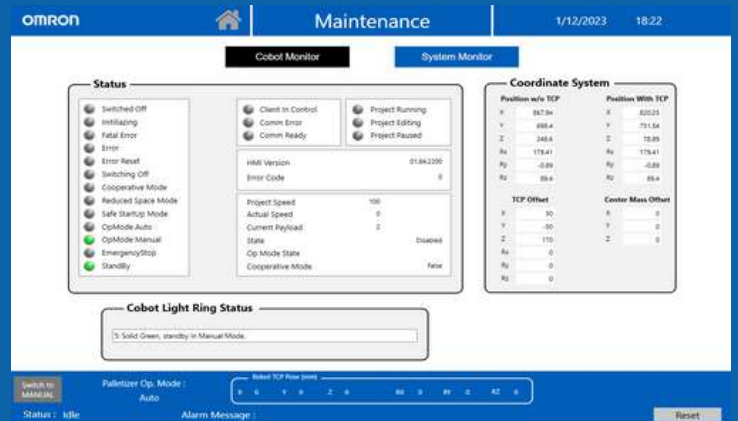
## 3 DEFINE LAYOUT & CONFIGURATION



## 4 SET PALLET PATTERN




## DASHBOARD







## CONTACT US

 63 Hillview Avenue, #10-21  
Lam Soon Industrial Building, Singapore 669569

 [sales@precicon.com.sg](mailto:sales@precicon.com.sg)

 (65) 6672 9229 (Call/WhatsApp)

 [www.precicon.com.sg](http://www.precicon.com.sg)

  **FOLLOW US**  
@precicon

