

Switch Mode Power Supplies

S8VK-X

Expanding Network Connectivity;

IoT Production Site Innovation



Production Site Innovation inspired by IoT

The production site of the future that OMRON aims to create is one where the health status of its facilities, invisible today, becomes visible.

- Conditions are visible, anytime, anywhere.
- Information is displayed collectively by equipment/site.
- Past data is retrievable.

Facility conditions will be visualized by IoT and seamlessly connected to other sites all over the world. Facility operating rate will be systematically maintained; the way of working will be dramatically changed.






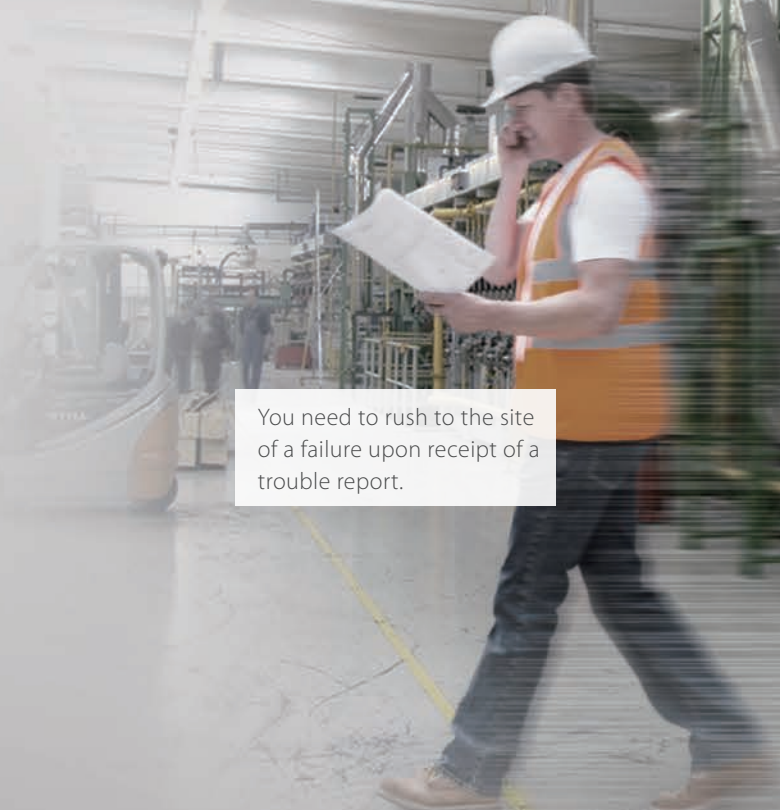
A new style of facility maintenance brought

Visualizing and centrally controlling the condition of power supplies enables you to systematize equipment maintenance before equipment trouble occurs, eliminating unexpected response and unnecessary premature replacement, and thus reducing the overall maintenance cost.

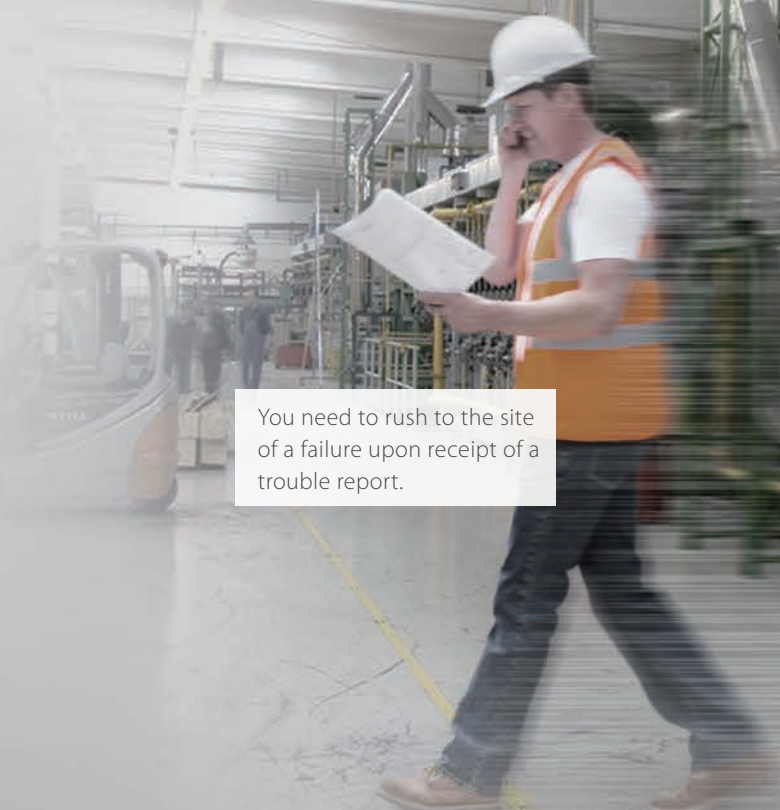
Until now...



Equipment conditions are not visible; you need to inspect them one by one on site to identify defective equipment.



You need to rush to the site of a failure upon receipt of a trouble report.



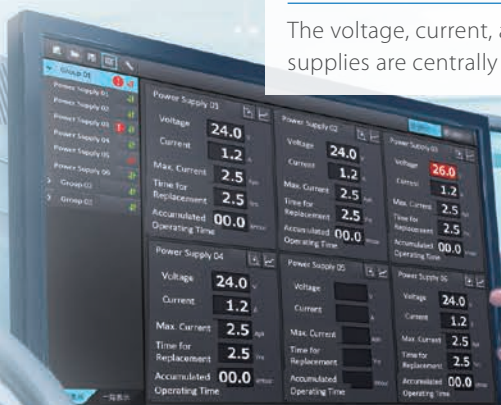
Preventive replacement long before the service life of equipment increases the maintenance cost.

about by the visualization of power supplies

From now on

Centralized monitoring of equipment conditions

The voltage, current, and replacement time of power supplies are centrally monitored by line or site.

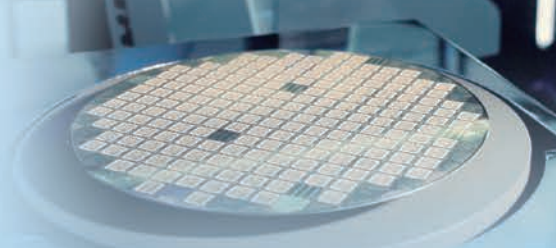


Improved accuracy of maintenance planning

Statistical use of past data enables you to identify the appropriate schedule and method for maintenance.

Enhanced facility operating rate and optimized maintenance cost

Improved accuracy of maintenance planning prevents unexpected equipment shutdown, achieves maintenance at the most appropriate schedule and cost, and thus optimizes the maintenance cost.



The first step in scheduled maintenance: visualization of the time to replace power supplies.

S8VK-X calculates the deterioration of the internal electrolytic capacitor based on its component's temperature. It is indicated on the display as well as via the communications system.

Years until replacement



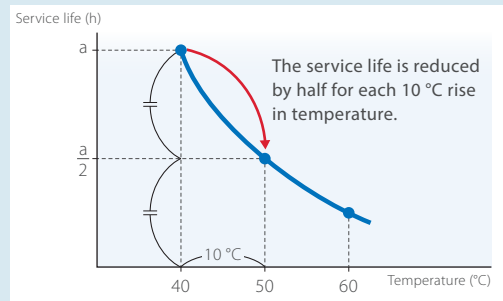
Percentage until replacement



Do you know?

A power supply has a service life.

In general, aged deterioration of the internal electrolytic capacitor degrades the original performance (service life) of a power supply and ceases to function in the end. Using a power supply close to its service life may cause a disruption of output voltage even at power-on state and unexpected shutdown of equipment.

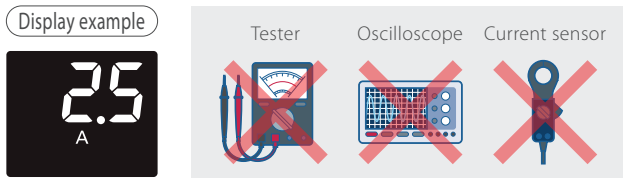


Relationship between service life of a electrolytic capacitor and temperature

Furthermore, voltage, current and maximum current can be displayed; More and more useful in various applications.

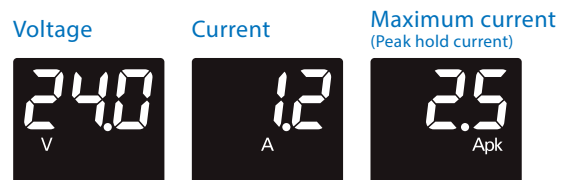
Advantages during design and measurement

You can easily check the expected output voltage and the designed current (steady-state and maximum) without using measuring equipment.



Advantages during operation

You can check the output voltage and current of power supplies on site without using a tester. You can also check the maximum current value.



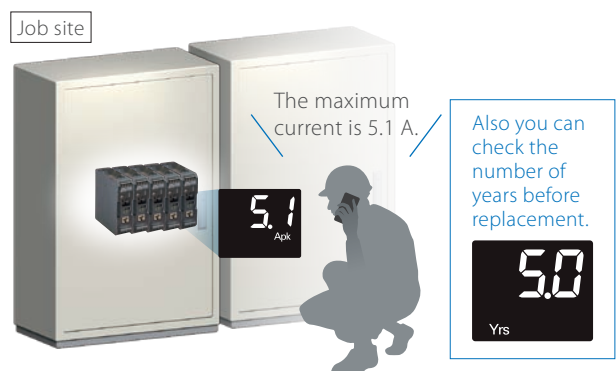
Advantages during malfunction and maintenance

You can report and give commands, while checking the output voltage and current by operating the monitor without using a tester.

What is the maximum current?



Contact person at the manufacturer or design division



Why don't you change your power supply to S8VK-X to achieve a new style of facility maintenance?

S8VS 240-W models



World's smallest class^{*1} of power supplies with a communication function

The space-saving design enables you to mount side-by-side and replace conventional power supplies in a control panel smoothly.

*1. According to OMRON investigation in October 2017.

Switch Mode Power Supplies **S8VK-X**

*2. Two units of S8VK-X 240 W and W451-03B Switching Hub

Excellent environmental resistance contributes to the stable operation of equipment

Temperature



-40 to 70 °C

Vibration and shock



Vibration: 5 G
Shock: 15 G

Humidity and gases



Coated PCBs

Altitude

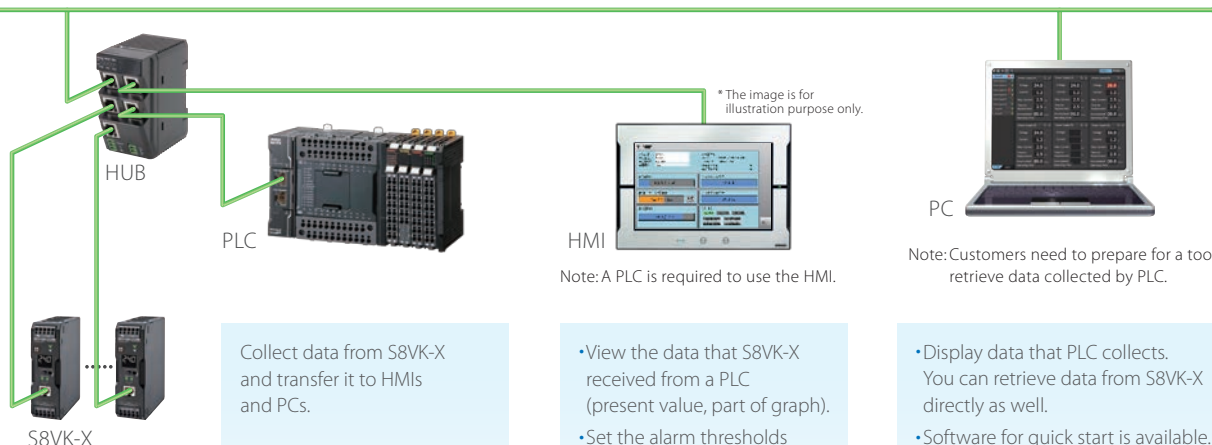


3,000 m

Compatible with the communication methods used globally in a variety of applications

Compatible with **EtherNet/IP** / **Modbus**

System configuration example



* The image is for illustration purpose only.

Note: A PLC is required to use the HMI.

Note: Customers need to prepare for a tool to retrieve data collected by PLC.

Collect data from S8VK-X and transfer it to HMIs and PCs.

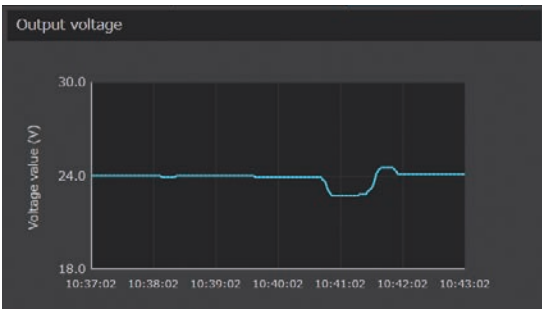
- View the data that S8VK-X received from a PLC (present value, part of graph).
- Set the alarm thresholds

- Display data that PLC collects. You can retrieve data from S8VK-X directly as well.
- Software for quick start is available.
- Save data
- Set the alarm thresholds

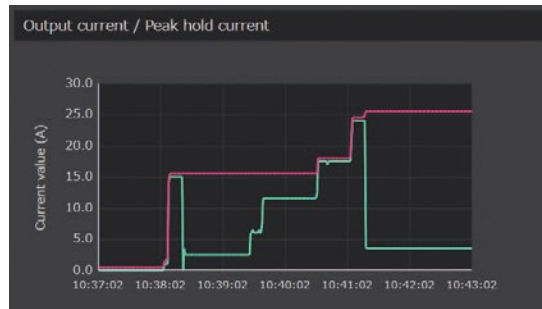
Voltage and current graph displays

Continuous data monitoring is possible without adding extra devices such as clamp meters and data loggers.

Output voltage

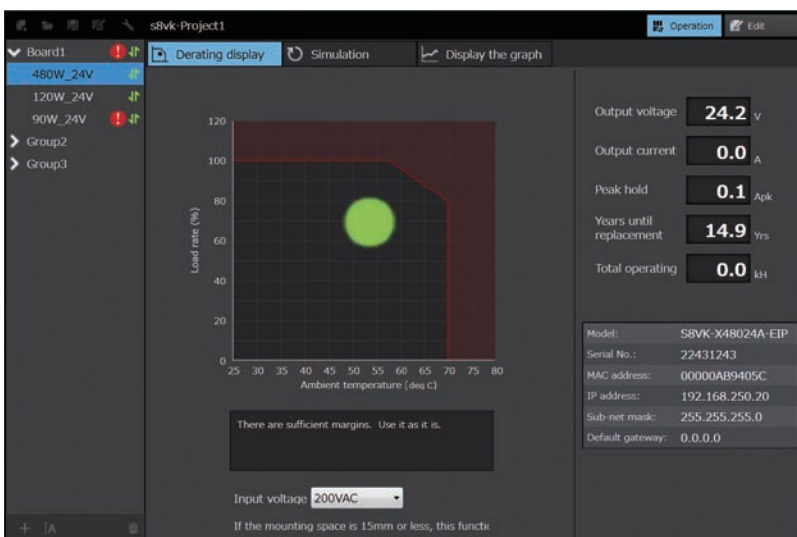


Output current/Maximum current



World's first* Usage status check and simulations

*According to OMRON investigation as of March 2018.



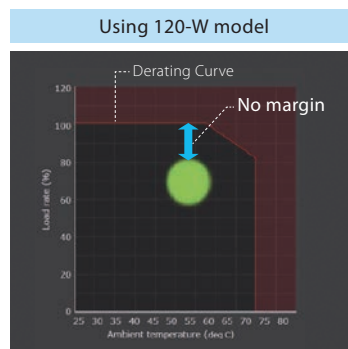
It is possible to check the status of power supply usage in real time on a derating chart and to identify risks.

Unexpected equipment shutdowns can be prevented by appropriate maintenance beforehand. This contributes to the realization of equipment that does not stop and improves facility operating rates.



Example use

- It is possible to simulate the margin that would be created if the product currently in use is replaced with a type with a larger capacity.
- It is possible to check how the margin (the existence of risk) on the power supply is affected by changes in the surrounding environment, such as between daytime and nighttime and in different seasons.



Communications and display items

Item		Monitor display	Communication		
			EtherNet/IP™		Modbus TCP
			CIP message	Tag data link	
Output voltage		✓	Read	Read	Read
Output current		✓	Read	Read	Read
Output peak hold current		✓	Read and write*	Read	Read and write*
Years until replacement Percentage until replacement		✓	Read	Read	Read
Total run time		✓	Read	Read	Read
Continuous run time		✓	Read	Read	Read
Self-diagnostics	Overheating alarm	✓	Read	Read	Read
	Measured value error	✓	Read	Read	Read
	Memory error	✓	Read	Read	Read
Product model		—	Read	None	Read
Serial number		—	Read	None	Read
Firmware version		—	Read	None	Read
IP address Subnet mask Default gateway		—	Read and write	None	Read and write
MAC address		—	Read	None	Read

* Pressing the reset key or communications writing (Ethernet/IP CIP message or Modbus/TCP) resets the value to 0.

Operating Environment

Item	Description
OS	Windows 7, 8.1 or 10 (32-bit or 64-bit) (Japanese or English)
CPU	1 GHz or more, 32 bit or 64 bit processor
Memory	1 GB or more, or 2 GB or more (64-bit)
Free disk space	16 GB or more, or 20 GB or more (64-bit)
Monitor resolution	1024 × 768 (XGA), High Color 16-bit or more
Others	LAN port: For network connection

EtherNet/IP™ is the trademarks of ODVA.

Modbus is a registered trademark of Schneider Electric.

Other company names and product names in this document are the trademarks or registered trademarks of their respective companies.

OMRON Corporation Industrial Automation Company
Kyoto, JAPAN

Contact: www.ia.omron.com

Regional Headquarters

OMRON EUROPE B.V.

Wegalaan 67-69, 2132 JD Hoofddorp
The Netherlands
Tel: (31)2356-81-300/Fax: (31)2356-81-388

OMRON ELECTRONICS LLC

2895 Greenspoint Parkway, Suite 200
Hoffman Estates, IL 60169 U.S.A.
Tel: (1) 847-843-7900/Fax: (1) 847-843-7787

OMRON ASIA PACIFIC PTE. LTD.

No. 438A Alexandra Road # 05-05/08 (Lobby 2),
Alexandra Technopark,
Singapore 119967
Tel: (65) 6835-3011/Fax: (65) 6835-2711

OMRON (CHINA) CO., LTD.

Room 2211, Bank of China Tower,
200 Yin Cheng Zhong Road,
PuDong New Area, Shanghai, 200120, China
Tel: (86) 21-5037-2222/Fax: (86) 21-5037-2200

Authorized Distributor:

© OMRON Corporation 2017-2018 All Rights Reserved.
In the interest of product improvement,
specifications are subject to change without notice.

CSM_1_3_1218
Cat. No. T211-E1-02

0418(1117)